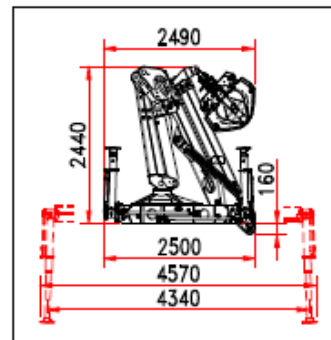
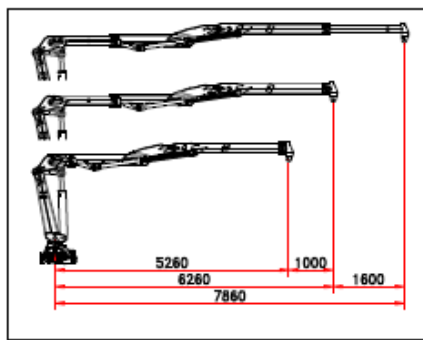
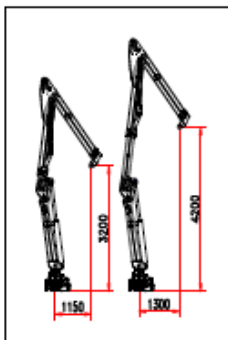


CRANE « W 130 S2 »

<p>FOLDABLE</p> <ul style="list-style-type: none"> • Class of calculation H1B4 • Lifting moment = 130 km • Hydraulic outreach = 7,86 m • First arm with hydraulic extension • Jib with one hydraulic extension with integrated fluid transmission system inside jib • Compensated proportional flow control • Top seat control with two additional functions at the jib extension • Stabilizers ground bilateral controls with extension and 180° hydraulic rotation • Crane rotation 425° with double rack • Construction to Machinery Directives 2006/42/CE+UNI EN 12.999 • Basic crane weight*: 2.630 kg * The weight is indicative and referred to the basic crane without options or, accessories, protection covers and ancillary equipments (grab, clamp, glass handling device) <p>Options:</p> <ul style="list-style-type: none"> • Proportional electro-hydraulic flow control with SCANRECO radio control • Lateral top seat control with joystick and pedals • Man standing platform with crane operative restricted area • Ground hoisting control • Glass container handling device • Oil cooling system • Top seat access ladder • Working lights (top seat and jib light) • Hour counter • Dry seat foldable shelter 	
--	--



SK

Zdvihový moment: 130 km

Hydraulický dosah: 7,86 m

Otočný uhol: 425°

Hmotnosť: cca 2630 kg

Stabilizátory s otočným uhlom 180°

Radio-ovládanie

Systém pre ochladzovanie oleja

Časovač

Pracovné osvetlenie