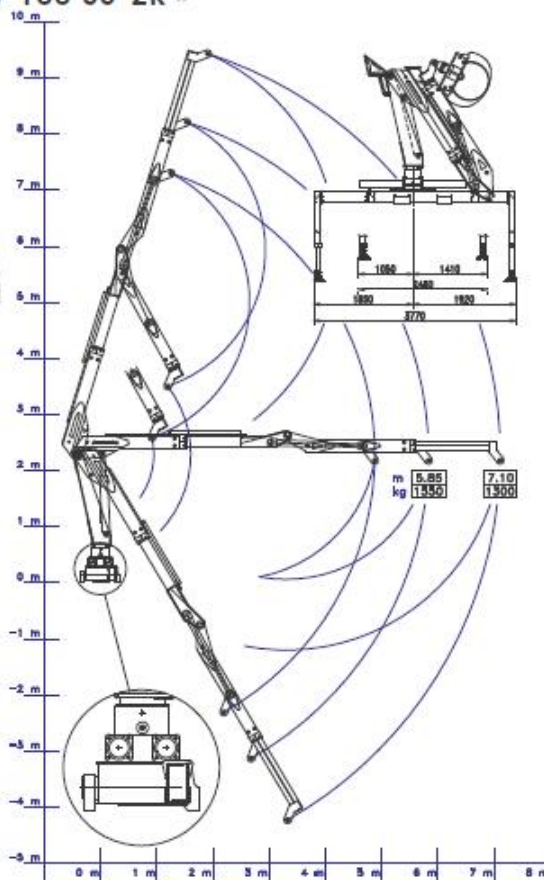


CRANE « W 100 SS-2R »



Standard

Lifting moment - 10 t/m
Hydraulic outreach - 7,20 m
Jib with hydraulic extension
Ground 3-element-flow control
Top seat controls with one additional function
360° double rack rotation
Hydraulic stabilizers with manual extension
Access ladder
Painting in orange RAL 2002 (or other out of choice)
Construction according to Machinery Directives
98/37/CE, 98/336/CE and DIN 15018
Approx. weight - kg 2.400

Options:

Second additional function for rotator
Hydraulic stabilizers with hydraulic extension
Electro-hydraulic proportional DANFOSS-flow control
with proportional radio control
Seat control with cross levers and pedals
Glass container handling device
Oil cooling system
Various lifting disposals for different kinds of use



SK

Zdvihový moment: 10 tnm

Hydraulický dosah: 7,20 m

Otočný uhol: 360°

Hydraulické stabilizátory s manuálnym výsuvom

Hmotnosť: cca 2400 kg

Prídavná funkcia pre rotátor

Systém pre ochladzovanie oleja

Variabilné zdvižné dispozície pre rôzne druhy použitia